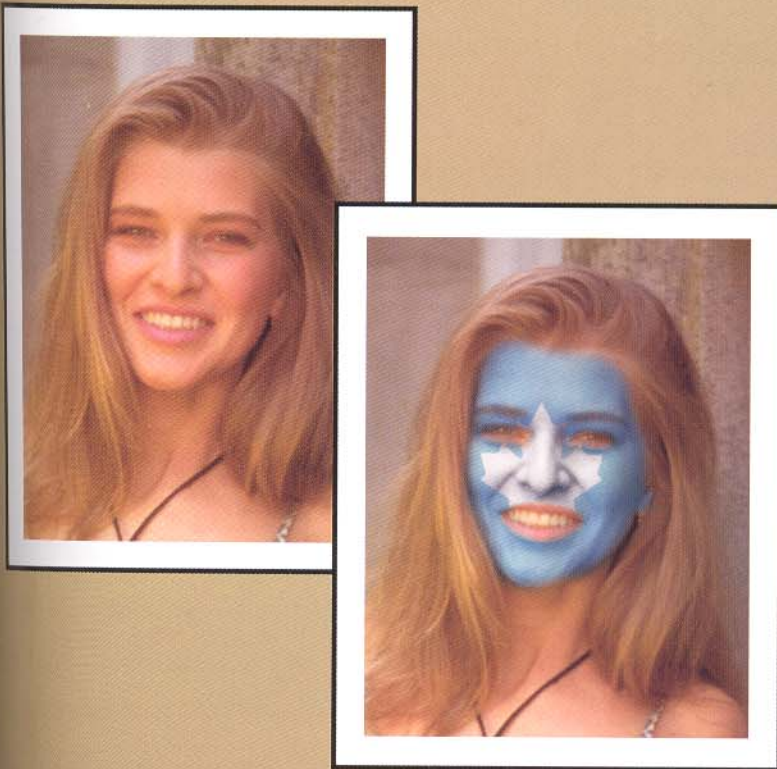


# Superfan

# 7



There is a classic episode from the hit television show "Seinfeld" in which one of the character's boyfriends paints his face to go to a hockey game and shouts out "You suck, Messier!" Whether you've seen the episode or not, almost anyone who has attended a professional or amateur sporting event has witnessed the "Superfan" -- that person who takes the game and their passion for the team far too seriously. In this project, you can emulate that "Superfan" look with any photo. We'll use a maple leaf image that was downloaded from the Internet as our template for painting on the makeup.



## Project Files

The files for this project are called mapleleaf.tif and superfan.tif and can be found at:  
[www.mimosabooks.com/files](http://www.mimosabooks.com/files)



## Completion Time

After the files have been downloaded, this project should take approximately ten minutes to fifteen minutes to complete.



## Degree of Difficulty



## Project Tools

-  Magic Wand Tool
-  Eraser Tool
-  Lasso Tool
-  Move Tool



## Palettes

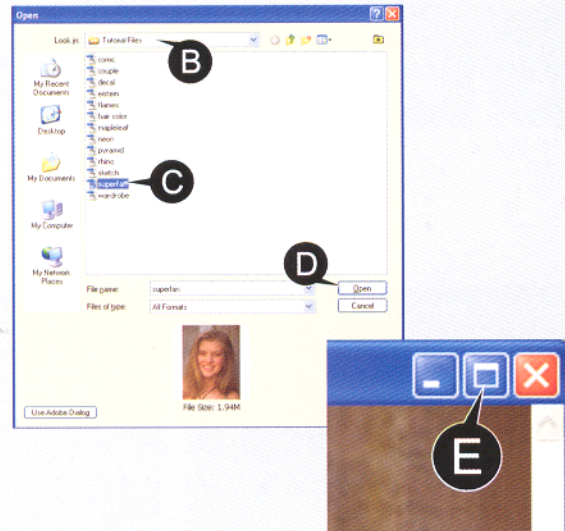
Ensure the following palettes, which can be accessed from the Window menu, are open for this project:

Tools  
Navigator  
Layers

## STEP 1 : OPEN THE TUTORIAL

Before we can get any work done, we need to first open the file we'll be using in this project.

- A. Press Ctrl+O (PC) or Command+O (Mac) to launch the Open dialog box.
- B. Browse to the folder where you saved the tutorial files.
- C. Click on the file entitled "superfan.tif." It will be highlighted.
- D. Click the Open button. The file will open.
- E. Click the Maximize button to expand the window.



## STEP 2 : ISOLATING THE FACE

We only want to apply the superfan makeup to the face of the woman, so we need to isolate that area. Prior to the isolation, we'll duplicate the background layer so that we can prevent doing any damage to the original image.

- A. Press Ctrl+J (PC) or Command+J (Mac) to duplicate the background layer.
- B. Click on the Lasso Tool button. If the Lasso Tool button isn't present (for example, if the Magnetic Lasso Tool button is showing), you may have to click and hold on the button and select the Lasso Tool option.
- C. Type "10" in the Feather box in the options bar.
- D. Click and drag around the woman's face. Don't worry if your selection isn't perfect, we've feathered the outside of the selection so that it'll look realistic.

